

# SEPERE - 2D - TRIG REVIEW (G.9)

1. Solving proportions Solve for  $x$ . Express each answer as a fraction in lowest terms.

a)  $\frac{x}{7} = \frac{11}{35}$

b)  $\frac{2}{3} = \frac{7}{x}$

c)  $\frac{3}{4} = \frac{x}{6}$

d)  $\frac{2}{x} = \frac{8}{5}$

e)  $11 = \frac{2}{x}$

f)  $\frac{6}{x} = 9$

g)  $x:3 = 8:5$

h)  $2:x = 4:3$

i)  $4:5 = x:7$

j)  $8:20 = 6:x$

2. Solving proportions Solve for  $x$ . Express each answer as a decimal. Round to the nearest hundredth, if necessary.

a)  $\frac{x}{4.3} = 7.1$

b)  $21.78 = \frac{x}{1.27}$

c)  $\frac{5.6}{x} = 4.2$

d)  $8.9 = \frac{3.3}{x}$

e)  $\frac{x}{2.4} = \frac{1.6}{8}$

f)  $\frac{3.6}{x} = \frac{9}{0.3}$

g)  $\frac{3}{0.5} = \frac{1.5}{x}$

h)  $\frac{0.72}{0.4} = \frac{x}{1.4}$

i)  $x:3.8 = 2.5:2$

j)  $3.2:0.4 = 9.6:x$

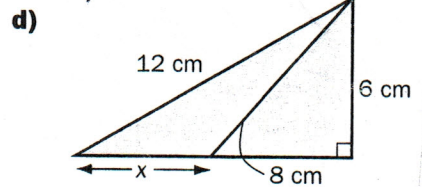
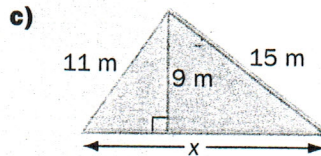
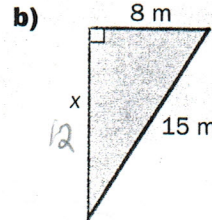
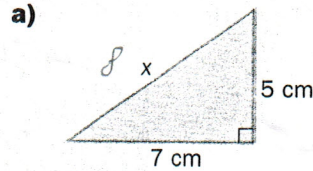
k)  $1.75:x = 4.5:0.7$

l)  $2.8:3.5 = x:8.2$

1. a)  $\frac{11}{5}$  b)  $\frac{21}{2}$  c)  $\frac{9}{2}$  d)  $\frac{5}{4}$  e)  $\frac{2}{11}$  f)  $\frac{2}{3}$  g)  $\frac{24}{5}$  h)  $\frac{3}{2}$  i)  $\frac{28}{5}$   
j) 15 2. a) 30.53 b) 27.66 c) 1.33 d) 0.37 e) 0.48  
f) 0.12 g) 0.25 h) 2.52 i) 4.75 j) 1.2 k) 0.27 l) 6.56

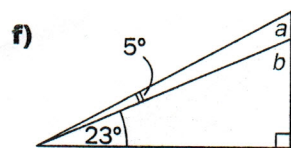
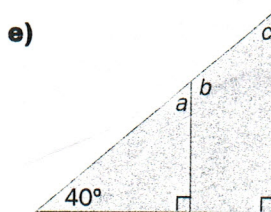
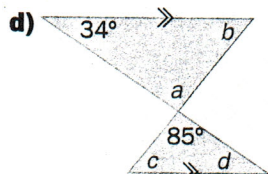
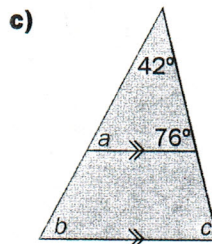
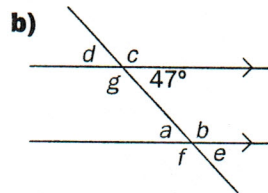
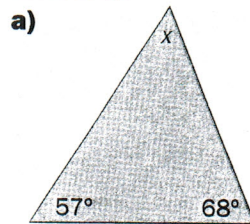
Don't Forget!  
 $a^2 + b^2 = c^2$

2. Measurement Calculate the length of the unknown side, to the nearest tenth of a unit.



2. a) 8.6 cm b) 12.7 m c) 18.3 m  
d) 5.1 cm

4. Angle properties Find the missing angle measures.



4. a)  $x = 55^\circ$  b)  $a = 47^\circ, b = 133^\circ, c = 133^\circ, d = 47^\circ, e = 47^\circ, f = 133^\circ, g = 133^\circ$  c)  $a = 62^\circ, b = 62^\circ, c = 76^\circ$   
d)  $a = 85^\circ, b = 61^\circ, c = 61^\circ, d = 34^\circ$  e)  $a = 50^\circ, b = 130^\circ, c = 50^\circ$  f)  $a = 62^\circ, b = 67^\circ$